

Quick Start Guide

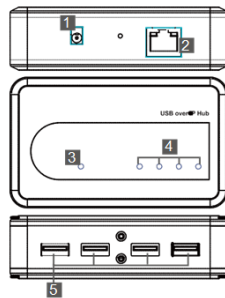
UE204

USB Over Ethernet Server

1. Check for Required Hardware

- ☐ UE204 USB Over Ethernet Server
- ☐ This Quick Start Guide
- ☐ CD ROM with Configuration Software and User Manual
- ☐ Power Adapter w/ International Blades

2. Controls & Indicators



1	DC Power Jack	Barrel Connector, 7.5 mm, Center Positive
2	Network Connection	RJ-45, 10/100/1000 Ethernet
3	Power LEDs	Green – ON when Power is Applied
4	USB Port LED's	Green – ON when USB Port is connected
5	USB Ports	Type A, USB 2.0

3. Install the software on your PC

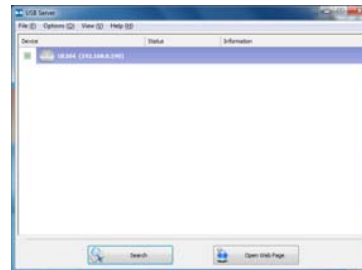
4. Insert the CD into your CD ROM Drive. The installation program should start automatically. If not, navigate to the installation executable file and double click on it. Follow the instructions provided by the installation wizard.

4. Connect and Configure the USB Server

1. Connect the USB Server to your network and plug in the power.
2. Launch the application software using the desktop icon

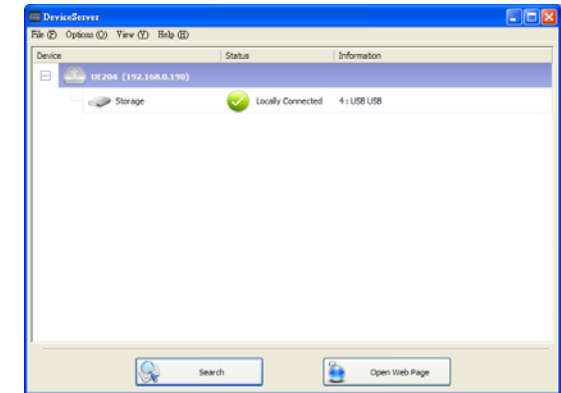


3. The main dialog box will open and the software will search the network for connected USB server. The default IP setting is DHCP Enabled. If a DHCP server is not available, it will use IP address 169.254.10.10



5. Connect to the USB Device

1. When the USB Server is located, the connected USB devices will be listed on the tree under the server. Double click on the device to connect to it.



2. You will now be able to use the device the same as if it was connected to your PC.